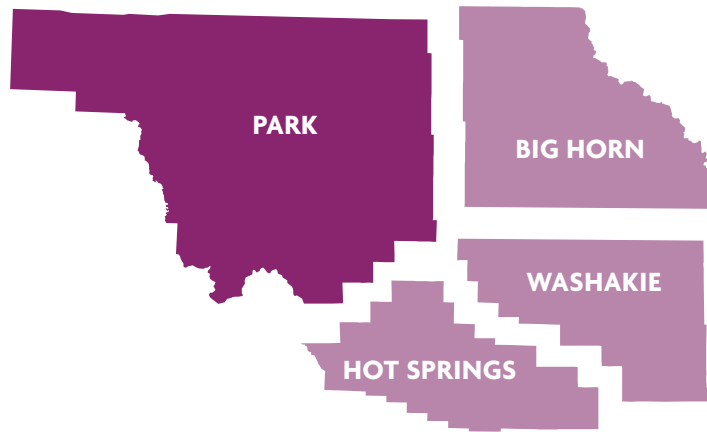




 **Healthy
Park County**
A Park County Health Coalition Initiative

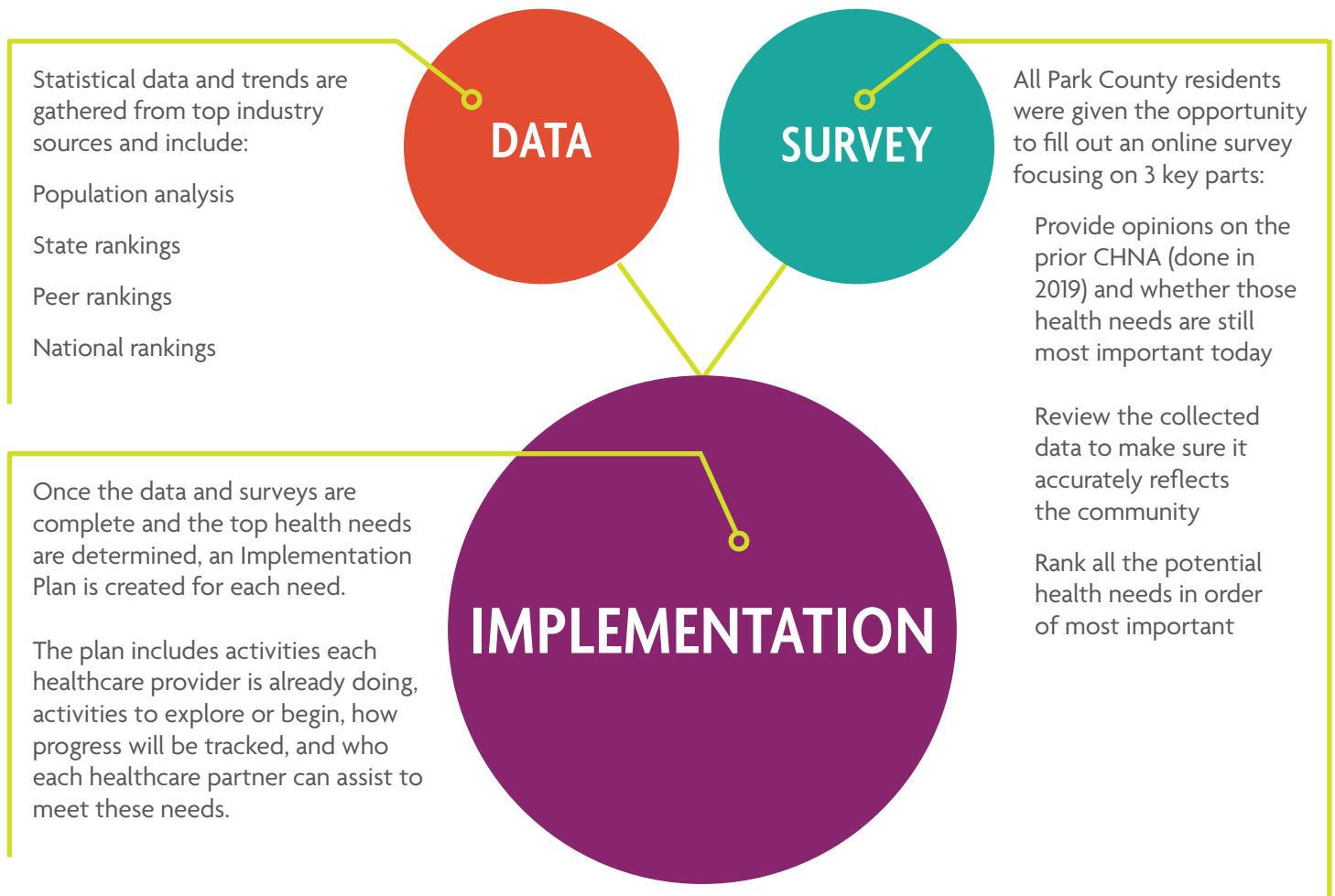
2022

Community Health Needs Assessment



Park County healthcare providers have come together to support the community in ways that go above and beyond providing care within their walls. To help determine the most critical health needs facing the area, these providers have performed a Community Health Needs Assessment (CHNA) that brings together county-level data and viewpoints throughout Park County. They then developed a plan for how it can help address the top health needs (see below).

Process



Data

DEMOGRAPHICS

	PARK COUNTY	WYOMING	U.S.
2019 Population	29,194	578,759	334,289,437
% Increase/Decline	4.0%	2.5%	6.0%
Persons in poverty	8.2%	9.2%	11.4%
% White, non-Hispanic	90.9%	83.7%	76.3%
% Hispanic	5.44%	10%	18.5%
Median Household Income	\$63,582	\$64,049	\$67,521
Median Home Value	\$268,500	\$272,700	\$374,900
Unemployment Rate (Aug '16)	3.8%	3.8%	3.8%
% Population >65	24.4%	17.1%	16.0%
% Households with a computer	93.8%	91.8%	89%

COMPARISON TO WYOMING COUNTIES



To better understand the community, Park County has been compared to all 23 counties in Wyoming across five areas: Health Outcomes, Health Behaviors, Clinical Care, Social & Economic Factors, and Physical Environment. Only areas where Park County is worse than both the state and U.S. best have been included.

	Park County	Wyoming	U.S. Best
Access to Exercise Opportunities	61%	76%	91%
Alcohol-impaired Driving Deaths	22%	33%	11%
Sexually Transmitted Infections [^]	304.4	374.4	161.2
Uninsured	13%	12%	6%
Unemployment	4%	3.6%	2.6%
Children in Poverty	14%	12%	10%
Violent Crime [^]	193	220	63
Long Commute - Driving Alone	16%	15%	16%
Children in single-parent households	20%	18%	14%
Injury Deaths	99	95	59

Data

POPULATIONS

82414	Cody	9,764
82435	Powell	6,295
82440	Ralston	564
82410	Basin	1,388
82412	Byron	519
82421	Deaver	140
82426	Greybull	1,981
82431	Lovell	2,237
82401	Worland	5,180
TOTAL		28,068

As of March 9, 2022, the current 7-day moving average of daily new cases (37,147) decreased 28.8% compared with the previous 7-day moving average (52,156). A total of 79,248,406 COVID-19 cases have been reported in the United States as of March 9, 2022 (CDC).

According to America's Health Rankings, suicide is the tenth-leading cause of death in the United States. It is the fourth-leading cause of death for adolescents ages 15-19 globally. In 2019, there were an estimated 3.5 million people who planned a suicide, 1.4 million suicide attempts and 47,511 deaths by suicide.

There were 136 diabetes related deaths in Wyoming in 2015 (CDC, 2015). In 2014, 8% of Wyoming adults were told by their doctors that they have diabetes (BRFSS, 2014).

Top 10 Causes of Death in Wyoming

- 01 COVID-19
- 02 CANCER
- 03 HEART DISEASE
- 04 CEREBROVASCULAR DISEASES (STROKE)
- 05 ACCIDENTS & ADVERSE EFFECTS
- 06 ALZHEIMER'S DISEASE
- 07 SUICIDE & SELF-INFLICTED INJURY
- 08 COPD & ALLIED CONDITIONS
- 09 SEPTICEMIA
- 10 PNEUMONIA & INFLUENZA

Survey

The Community Health Needs Assessment Survey was put together for quality data in support of the quantitative data collected. The survey was made available via public websites and coalition emails.

2022 Significant Health Needs According to Our Communities

Top 2 Health Concerns
Mental Health & Substance Abuse

A total of 555 individuals responded to Park County Survey. Comments included:

“The anxiety, depression, and suicide rates in our youth in Park County is too high.”

“There are great providers, but they are the hardest to access due to demand.”

“Mental health assistance is difficult to come by.”

“Very expensive here in Park Co. Lots of people go to Billings!”

“The vaccine mandate is about to make access to health care even worse, with staff shortages.”

“Thank you for all you do for our community, your positions are crucial. We appreciate the dedication and sometimes sacrifice it takes to stay happy and healthy in your line of work.”

“Needs of the elderly are not being met, particularly in residential situations.”

“More people need to be willing to get the vaccines to prevent or lessen the spread of Corona-virus.”

“Our health care providers do a good job, even with the limited resources.”

“Public Health did a great job in administering the COVID vaccines and boosters.”

Significant Health Needs

Based on this data, the following five health needs were identified as top Park County Health concerns. For more information on initiatives being implemented to address the following health needs, please contact Healthy Park County at <https://healthyparkcounty.org/contact-us/>.

1 Mental Health

2 Substance Abuse

3 Obesity / Physical Activity

4 Cancer

5 Suicide



THE 2022 COMMUNITY HEALTH NEEDS ASSESSMENT WAS PERFORMED IN PARTNERSHIP WITH:



* According to needs assessment data Park County Residents living in poverty experience a much higher rate of chronic health conditions than those with median to higher level incomes.